

Year 5
Mental Maths
Test 4 Week 8



Term 1

Instructions

- Test 4 (end of week 8)
- Listen carefully to each question. I will read each question twice before you write your answer

5 second response

Question 1

Write the number two thousand seven hundred in figures.

Question 2

Look at the number sentence on your sheet. Write the correct value in the missing box.

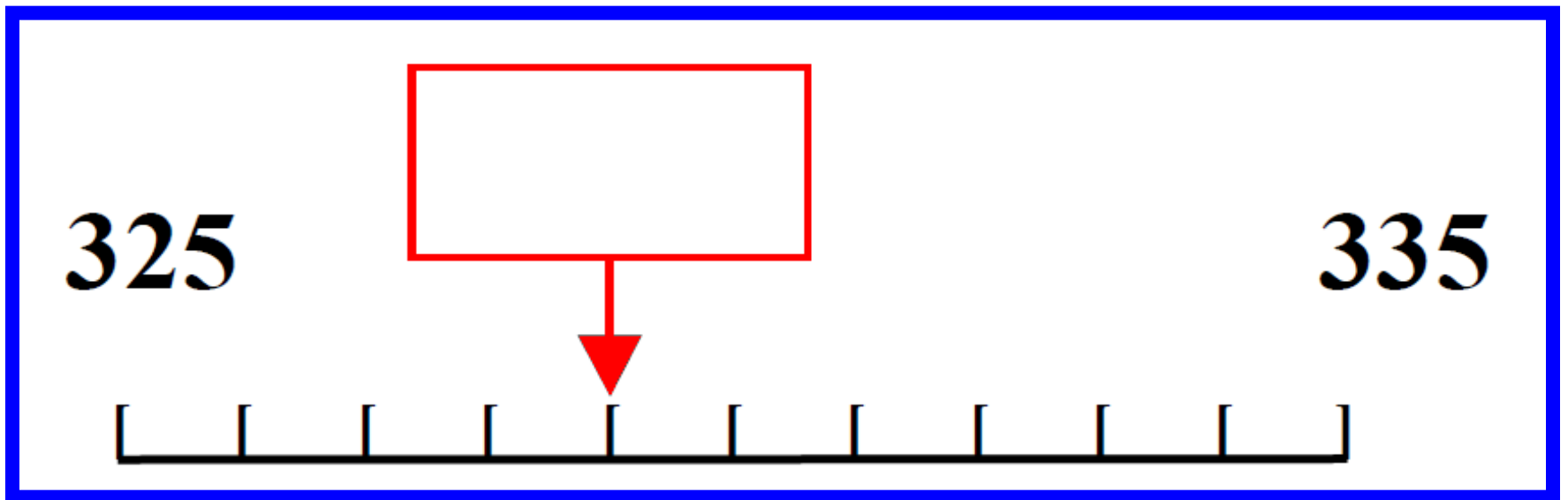
$$\boxed{} + 32 = 100$$

Question 3

Multiply one hundred and twenty five by ten.

Question 4

On your answer sheet is a scale. What is the number shown by the arrow?



Question 5

It is 697 miles from
London to Madrid.
Round this distance to
the nearest ten miles.

10 second response

Question 6

Look at the numbers on your answer sheet. Write the number which is exactly divisible by five and ten.

55

150

5

105

Question 7

Put a ring around the
largest of the five
numbers on your
sheet

7060

6720

6070

7070

6170

Question 8

What fraction of 1
metre is 50cm?

Question 9

What is 25% of £10?

Question 10

What is three less than
four thousand?

Question 11

Look at the number sequence on your sheet. Which number is missing from the empty box?

6, 13, 20,

Question 12

Decrease 72 by 34?

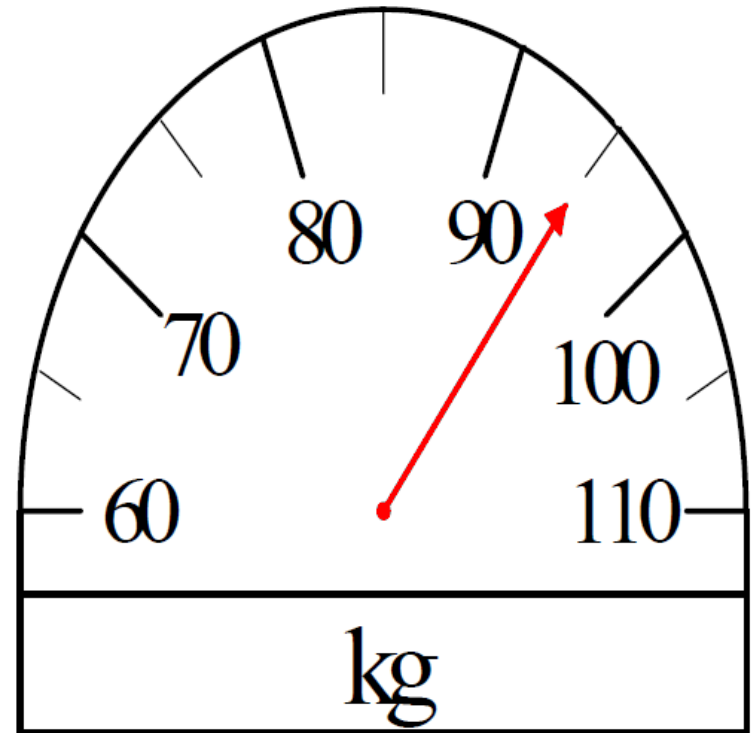
Question 13

What is half of 74?

Question 14

Look at the
scale on your
answer sheet.

What
measurement
does it show?



Question 15

Chews cost 5 pence.

How much would
fourteen chews cost?

15 second response

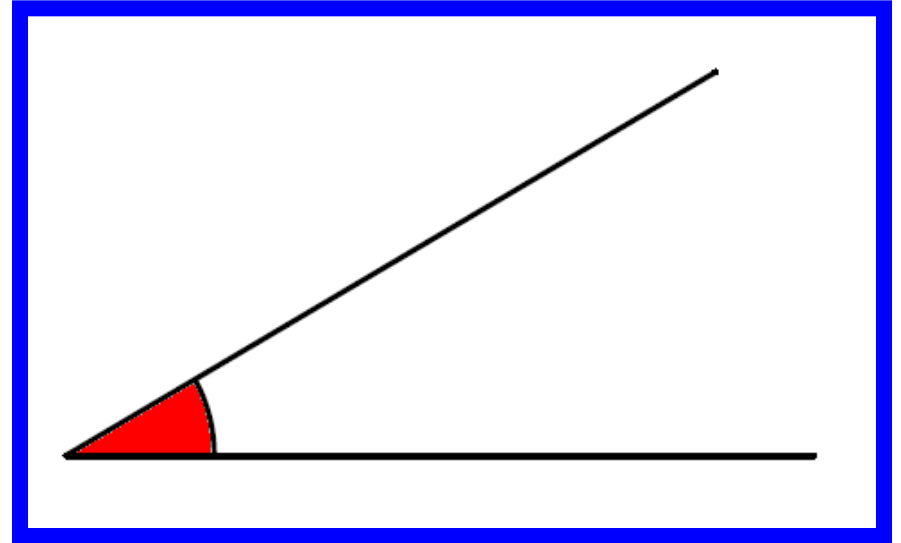
Question 16

Chews cost 5 pence.

How much would
fourteen chews cost?

Question 17

Look at the drawing on your answer sheet.



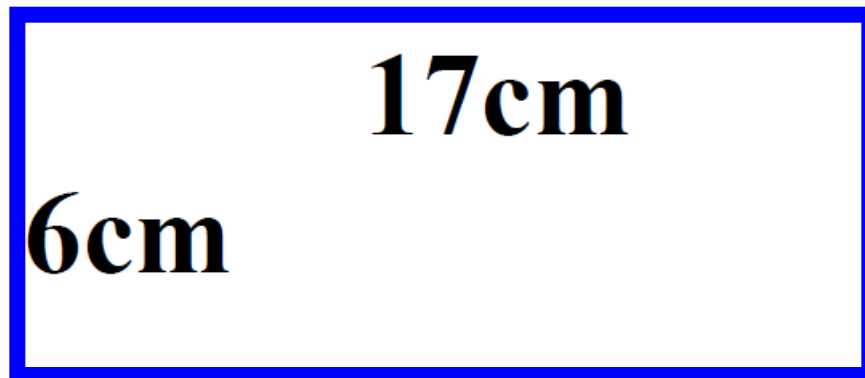
Estimate the size of the angle.

Question 18

Bill bought a tin of paint for £3.75. What was this change from £5?

Question 19

Look at the rectangle on your answer sheet. What is the perimeter of the rectangle?



Question 20

8000 metres is
equivalent to how
many kilometres?

5 Second Answers

1. Write the number two thousand seven hundred in figures. **(2700)**
2. Look at the number sentence on your sheet. Write the correct value in the missing box. **(68)**
3. Multiply one hundred and twenty five by ten. **(1250)**
4. On your answer sheet is a scale. What is the number shown by the arrow? **(329)**
5. It is 697 miles from London to Madrid. Round this distance to the nearest ten miles. **(700)**

10 Second Answers

6. Look at the numbers on your answer sheet. Write the number which is exactly divisible by five and ten. (**150**)
7. Put a ring around the largest of the five numbers on your sheet. (**7070**)
8. What fraction of 1 metre is 50cm? ($\frac{1}{2}$)
9. What is 25% of £10? (**£2.50**)
10. What is three less than four thousand? (**3997**)
11. Look at the number sequence on your sheet. Which number is missing from the empty box? (**6, 13, 20, 27**)
12. Decrease 72 by 34? (**38**)
13. What is half of 74? (**37**)
14. Look at the scale on your answer sheet. What measurement does it show? (**95 kg**)
15. Chews cost 5 pence. How much would fourteen chews cost? (**70p**)

15 Second Answers

16. How many days are there in the month of June? (**30**)
17. Look at the drawing on your answer sheet. Estimate the size of the angle. (**30 degrees \pm 5 degrees**)
18. Bill bought a tin of paint for £3.75. What was this change from £5? (**£1.25**)
19. Look at the rectangle on your answer sheet. What is the perimeter of the rectangle? (**46 cm**)
20. 8000 metres is equivalent to how many kilometres? (**8**)

YEAR 5 Mental Arithmetic Test 4

Hand Out - Test 4 Week 8

Name:

Date:

1

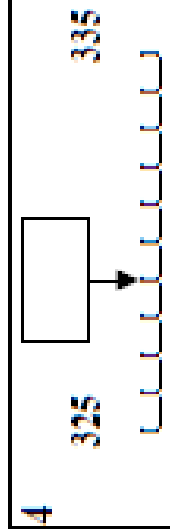
2

$$\square + 32 = 100$$

3

 125 10

4



5

 miles 697

6

 55 150
 5 105

7

 7060 6720 6070
 7070 6170

8

 50cm

9

 25% £10

£

10

 3 4000

11

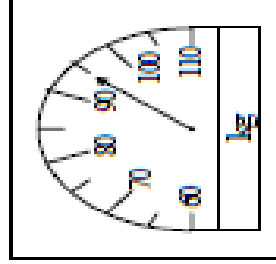
 6, 13, 20,

12

 72 34

13

14

 kg

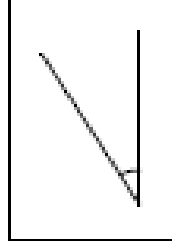
15

5p

 14

16

17

 0

18

 £ £3.75 £5

19

 cm

17cm

6cm

20

 km

8000m

References and additional resources.

The questions and ideas for this PowerPoint came from:
Wigan LEA Numeracy Centre
Year 5 Mental Arithmetic Tests

Thank You

PowerPoint template published by www.ksosoft.com

All the planning for this unit can be found at:
<http://www.wiganschoolsonline.net/curriculum/maths/assess.shtm>

Contains public sector information licensed under the Open Government Licence v3.0.
(<http://www.nationalarchives.gov.uk/doc/open-government-licence/version/3/>)

All images used in this PowerPoint was found at the free Public Domain Clip Art site. (<https://openclipart.org/>)
<http://www.clker.com> or were included in the original document.