

Year 4  
Mental Maths  
Test 2 Week 4



**Term 2**

# Instructions

- Test 2 ( end of week 4)
- Listen carefully to each question. I will read each question twice before you write your answer

**5 second response**

## Question 1

Write the number for  
three thousand and  
fifty one.

## Question 2

Add 8, 3 and 7.

## Question 3

From 84, take away 7.

## Question 4

Write the next odd number after 252.

252	
-----	--

## Question 5

Round 261 g to nearest  
100 grams.



## Question 6

What is the product of 4  
and 8?

## Question 7

To play a game, 35 children need to be put in teams of 7. How many teams will there be?

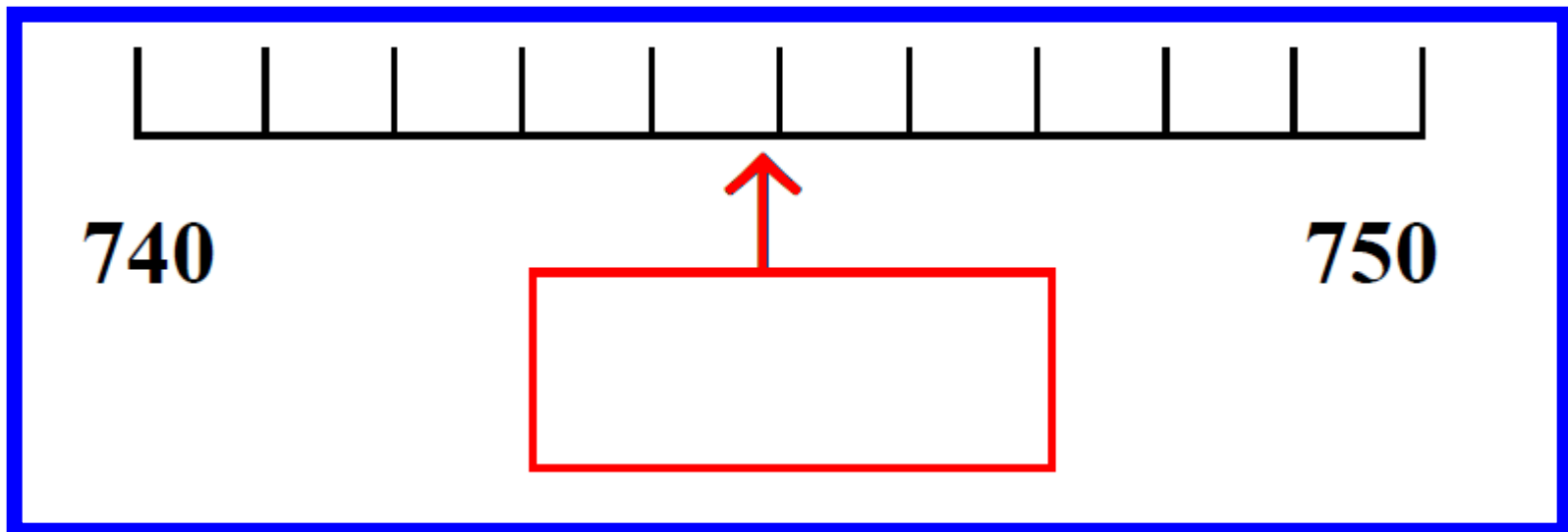
## Question 8

Write the correct symbol/sign greater than or less than in the empty box.

<b>761</b>	<input type="text"/>	<b>293</b>
------------	----------------------	------------

## Question 9

On your answer sheet is a scale. What is the number shown by the arrow?



Question 10

Double 41.

**10 second response**

## Question 11

Margaret uses 550 grams of flour from a 1 kg packet. How much flour is left?

## Question 12

Ring the name of the polygon that has 7 straight sides.

**triangle**

**heptagon**

**hexagon**

**pentagon**



## Question 13

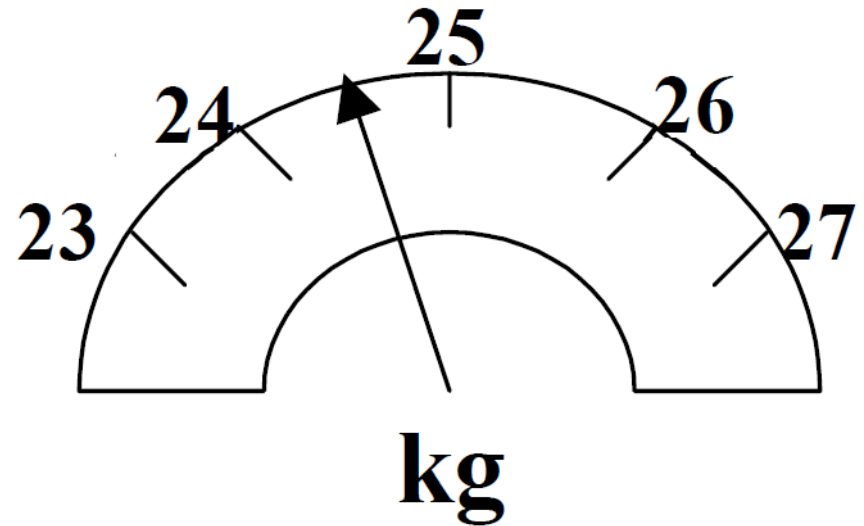
How many edges has a cuboid?

## Question 14

A bike journey starts at nine twenty and lasts for 50 minutes. At what time did the journey finish?

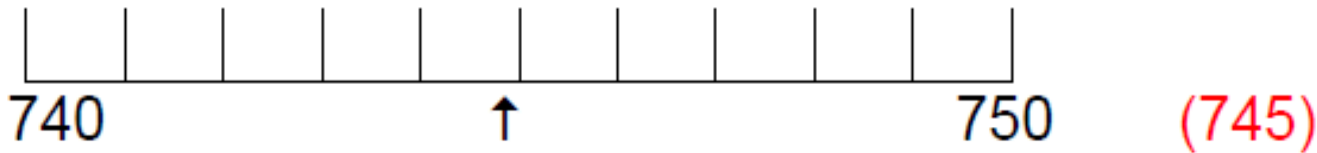
# Question 15

Peter stands on the bathroom scales shown on your sheet. Roughly what measurement is shown on the scales?



# 5 Second Answers

1. Write the number 3051. (3051)
2. Add 8, 3 and 7. (18)
3. From 84, take away 7. (77)
4. Write the next odd number after 252. (253)
5. Round 261g to nearest 100 grams. (300g)
6. What is the product of 4 and 8? (32)
7. To play a game, 35 children need to be put in teams of 7. How many teams will there be? (5)
8. Write the correct symbol/sign greater than or less than in the empty box. 761  293. (>)
9. On your answer sheet is a scale. What is the number shown by the arrow?



10. Double 41. (82)

# 10 Second Answers

11. Margaret uses 550 grams of flour from a 1kg packet. How much flour is left? (450g)
12. Ring the name of the polygon that has 7 straight sides.  
Triangle    Heptagon    Hexagon    Pentagon
13. How many edges has a cuboid? (12)
14. A bike journey starts at nine twenty and lasts for 50 minutes. At what time did the journey finish? (10 past 10)
15. Peter stands on the bathroom scales shown on your sheet.  
Roughly what measurement is shown on the scales? (24kg 200g – 24kg 400g)

**Name:**

**Date:**

<b>1</b>	
----------	--

<b>2</b>	8 3 7
----------	-------

<b>3</b>	84
----------	----

<b>4</b>	252
----------	-----

<b>5</b>	261g
----------	------

<b>6</b>	
----------	--

<b>7</b>	35 7
----------	---------

<b>8</b>	761 <input type="text"/> 293
----------	------------------------------

<b>9</b>	 <input type="text"/>
----------	--------------------------

<b>10</b>	
-----------	--

<b>11</b>		550g 1 kg
-----------	--	--------------

<b>12</b>	triangle	heptagon
	hexagon	pentagon

<b>13</b>	
-----------	--

<b>14</b>	9.20	50 mins
-----------	------	---------

<b>15</b>	 <input type="text"/>
-----------	--------------------------

# References and additional resources.

The questions and ideas for this PowerPoint came from:  
Wigan LEA Numeracy Centre  
Year 4 Mental Arithmetic Tests

# *Thank You*

PowerPoint template published by [www.ksosoft.com](http://www.ksosoft.com)

All the planning for this unit can be found at:  
<http://www.wiganschoolsonline.net/curriculum/maths/assess.shtm>

Contains public sector information licensed under the Open Government Licence v3.0.  
(<http://www.nationalarchives.gov.uk/doc/open-government-licence/version/3/>)

All images used in this PowerPoint was found at the free Public Domain Clip Art site. (<https://openclipart.org/>)  
<http://www.clker.com> or were included in the original document.