

Year 3
Mental Maths
Test 5 Week 10



Term 3

Instructions

- Test 5 (end of week 10)
- Listen carefully to each question. I will read each question twice before you write your answer

5 second response

Question 1

What number is 100
more than 437?

Question 2

Write in figures the
number six hundred
and thirteen.

Question 3

Round 539 to the
nearest 100.

Question 4

A watch costs between £6 and £7. How much might it have cost?

Question 5

If I am facing west and
turn clockwise through
 $\frac{3}{4}$ turn, in what
direction am I facing?

Question 6

Find the total of

16, 3, 5 and 7.

Question 7

Double 450.

Question 8

Put in the operation sign that would make the number sentence make sense.

63



98

=

161

Question 9

1 pen costs 75p. What is the cost of 4 pens?

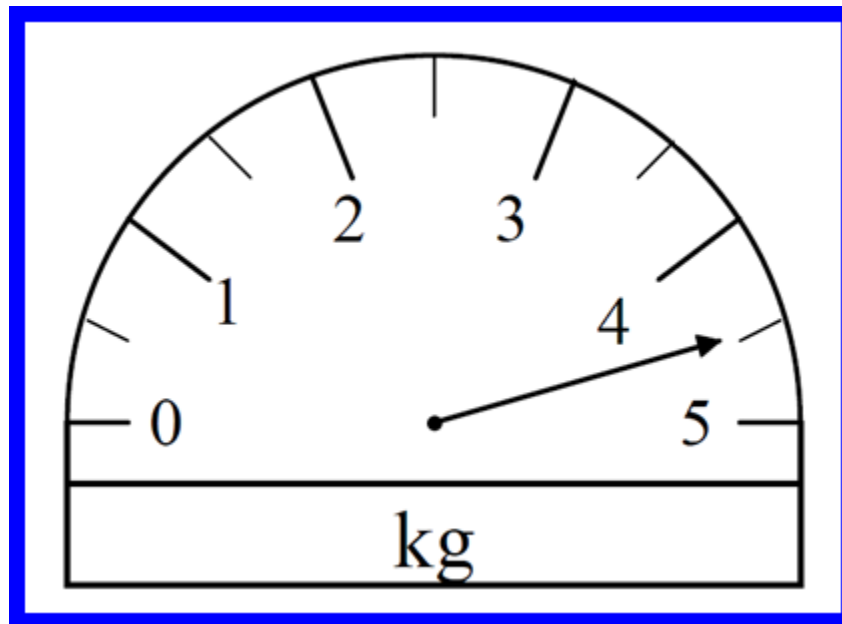
Question 10

Write two pounds and seven pence using the £ sign and decimal point.

10 second response

Question 11

What measurement is shown by the scales?

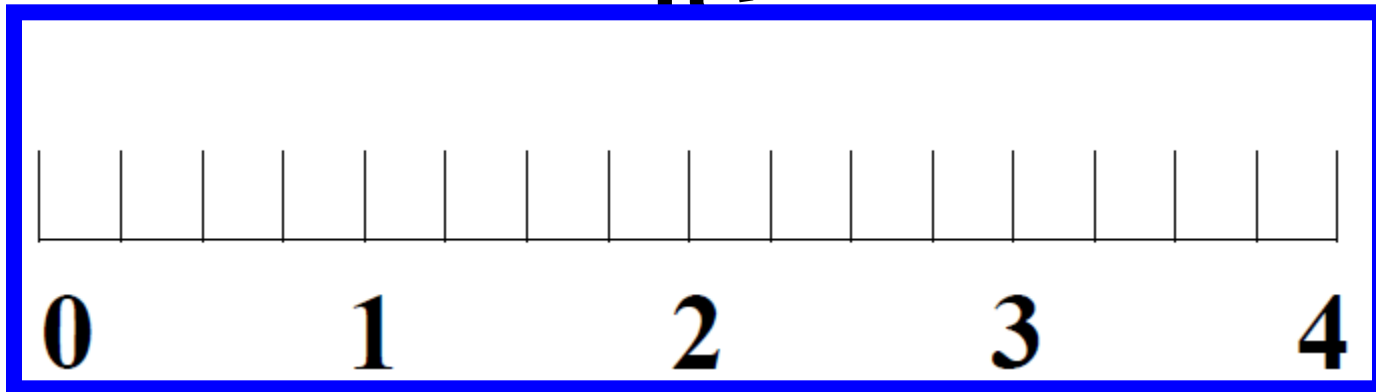


Question 12

If 75 sweets are shared between 10 children, how many sweets will be left over?

Question 13

Look at the number line on your sheet.
Draw an arrow to show where $2\frac{3}{4}$ is



Question 14

I think of a number,
double it and add 6.

The answer is 36.

What was my number?

Question 15

Write the missing number
in the empty box in the
sequence on your sheet.

5

9

17

21

5 Second Answers

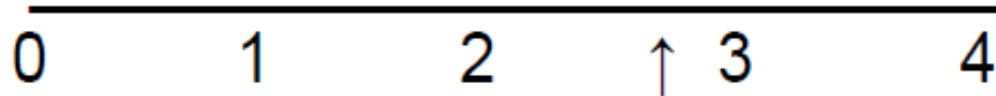
1. What number is 100 more than 437? **(537)**
2. Write in figures the number six hundred and thirteen. **(613)**
3. Round 539 to the nearest 100. **(500)**
4. A watch costs between £6 and £7. How much might it have cost? **(any amount from £6.01-£6.99 inc.)**
5. If I am facing west and turn clockwise through $\frac{3}{4}$ turn, in what direction am I facing? **(South)**
6. Find the total of 16, 3, 5 and 7. **(31)**
7. Double 450. **(900)**
8. Put in the operation sign that would make the number sentence make sense. $63 ? 98 = 161$ **(+)**
9. 1 pen costs 75p. What is the cost of 4 pens? **(£3)**
10. Write two pounds and seven pence using the £ sign and decimal point. **(£2.07)**

10 Second Answers

11. What measurement is shown by the scales? ($4\frac{1}{2}\text{kg}$ or 4.5kg)

12. If 75 sweets are shared between 10 children, how many sweets will be left over? (5)

13. Look at the number line on your sheet. Draw an arrow to show where $2\frac{3}{4}$ is.



14. I think of a number, double it and add 6. The answer is 36. What was my number? (15)

15. Write the missing number in the empty box in the sequence on your sheet.

5, 9, ?, 17, 21 (13)

Name:

Date:

1

2

3

539

4

5

	West
--	------

6

16	3
7	5

7

450

8

63	<input type="text"/>	$98 = 161$
----	----------------------	------------

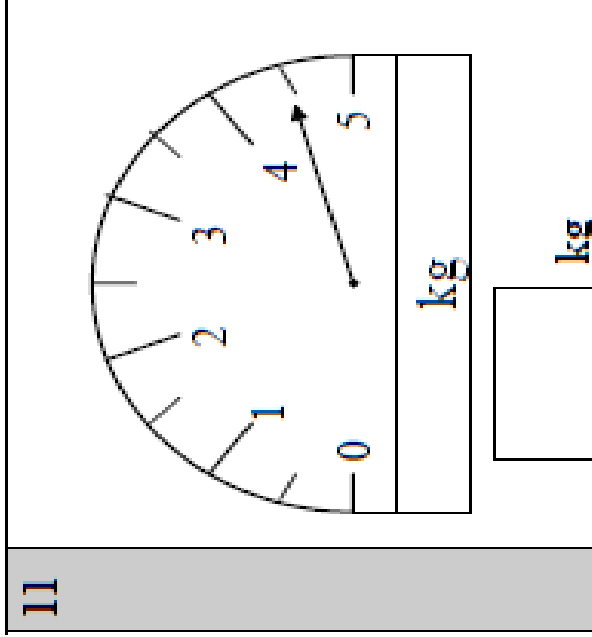
9

75p
4 pens

10

£

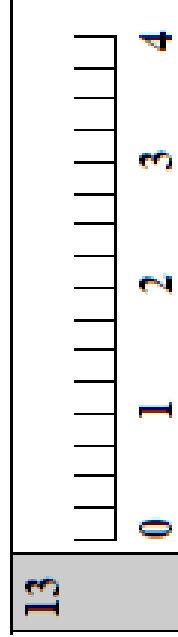
11



12

75 sweets
10 children

13



14

	36
--	----

15

<input type="text"/>	17	21
5	9	

Hand Out - Test 5 Week 10

References and additional resources.

The questions and ideas for this PowerPoint came from:
Wigan LEA Numeracy Centre
Year 3 Mental Arithmetic Tests

Thank You

PowerPoint template published by www.ksosoft.com

All the planning for this unit can be found at:
<http://www.wiganschoolsonline.net/curriculum/maths/assess.shtm>

Contains public sector information licensed under the Open Government Licence v3.0.
(<http://www.nationalarchives.gov.uk/doc/open-government-licence/version/3/>)

All images used in this PowerPoint was found at the free Public Domain Clip Art site. (<https://openclipart.org/>)
<http://www.clker.com> or were included in the original document.