

Year 3  
Mental Maths  
Test 2 Week 4



**Term 2**

# Instructions

- Test 2 (end of week 4)
- Listen carefully to each question. I will read each question twice before you write your answer

**5 second response**

## Question 1

What whole number comes immediately after two hundred and nineteen?

## Question 2

What number is  
halfway between 40  
and 50?

## Question 3

Round 74 to the nearest  
10.

## Question 4

Complete this number sentence:

$$123 = 100 + \square + 3$$

## Question 5

What shape has 4 right angles and opposite sides equal?



## Question 6

What is 40 plus 39?

## Question 7

What number multiplied  
by itself makes 25?

## Question 8

Write the next number  
in this sequence

**68, 66, 64, ?**

## Question 9

I think of a number then halve it. The answer is 9. What was my number?

## Question 10

Write in £s and pence  
the total of ten **10p**  
**coins** and 5 x **1p**  
**coins.**

**10 second response**

## Question 11

How many 5p coins are needed to make £5?

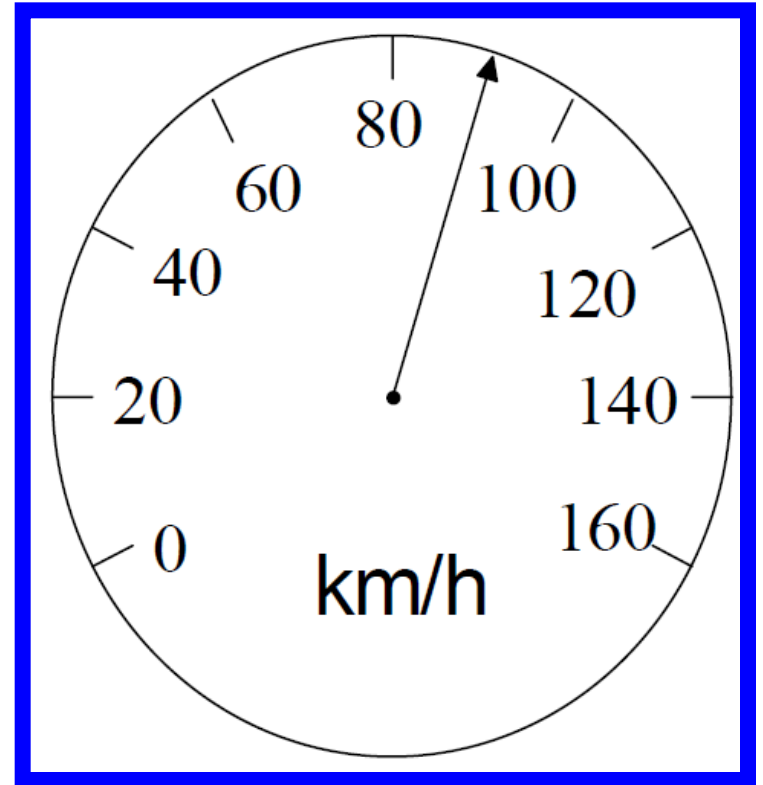
## Question 12

What is one quarter of  
20p?



# Question 13

What speed is shown on the speedometer on your sheet?



## Question 14

How many seconds are there in half a minute?

## Question 15

Circle the two numbers  
which have a sum of  
20?

**14**

**5**

**16**

**6**

# 5 Second Answers

1. What whole number comes immediately after two hundred and nineteen? **(220)**
2. What number is halfway between 40 and 50? **(45)**
3. Round 74 to the nearest 10. **(70)**
4. Complete this number sentence:  $123 = 100 + ? + 3$  **(20)**
5. What shape has 4 right angles and opposite sides equal? **(square or rectangle)**
6. What is 40 plus 39? **(79)**
7. What number multiplied by itself makes 25? **(5)**
8. Write the next number in this sequence 68, 66, 64, ? **(62)**
9. I think of a number then halve it. The answer is 9. What was my number? **(18)**
10. Write in £s and pence the total of ten 10p coins and 5 1p coins. **(£1.05)**

# 10 Second Answers

11. How many 5p coins are needed to make £5? **(100)**
12. What is one quarter of 20p? **(5p)**
13. What speed is shown on the speedometer on your sheet? **(90 km/h)**
14. How many seconds are there in half a minute? **(30)**
15. Circle the two numbers which have a sum of 20?  
**14, 5, 16, 6 (14,6)**

**YEAR 3 Mental Arithmetic Test 8**

Name:

Date:

1	
---	--

2	
---	--

3	
---	--

4	$123 = 100 + \square + 3$
---	---------------------------

5	
---	--

6	40	39
---	----	----

7	25
---	----

8	68	66	64	<input type="text"/>
---	----	----	----	----------------------

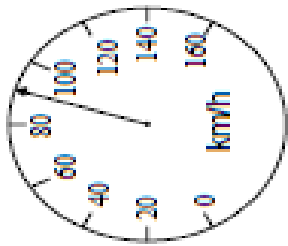
9		9
---	--	---

10	£	ten 10p	five 1p
----	---	---------	---------

11	coins	5p	£5
----	-------	----	----

12		p	20p
----	--	---	-----

13		Km/h
----	--	------



14	seconds	$\frac{1}{2}$ min
----	---------	-------------------

15	14	5	16	6	20
----	----	---	----	---	----

# References and additional resources.

The questions and ideas for this PowerPoint came from:  
Wigan LEA Numeracy Centre  
Year 3 Mental Arithmetic Tests

# *Thank You*

PowerPoint template published by [www.ksosoft.com](http://www.ksosoft.com)

All the planning for this unit can be found at:  
<http://www.wiganschoolsonline.net/curriculum/math/assess.shtm>

Contains public sector information licensed under the Open Government Licence v3.0.  
(<http://www.nationalarchives.gov.uk/doc/open-government-licence/version/3/>)

All images used in this PowerPoint was found at the free Public Domain Clip Art site. (<https://openclipart.org/>)  
<http://www.clker.com> or were included in the original document.